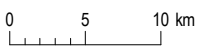
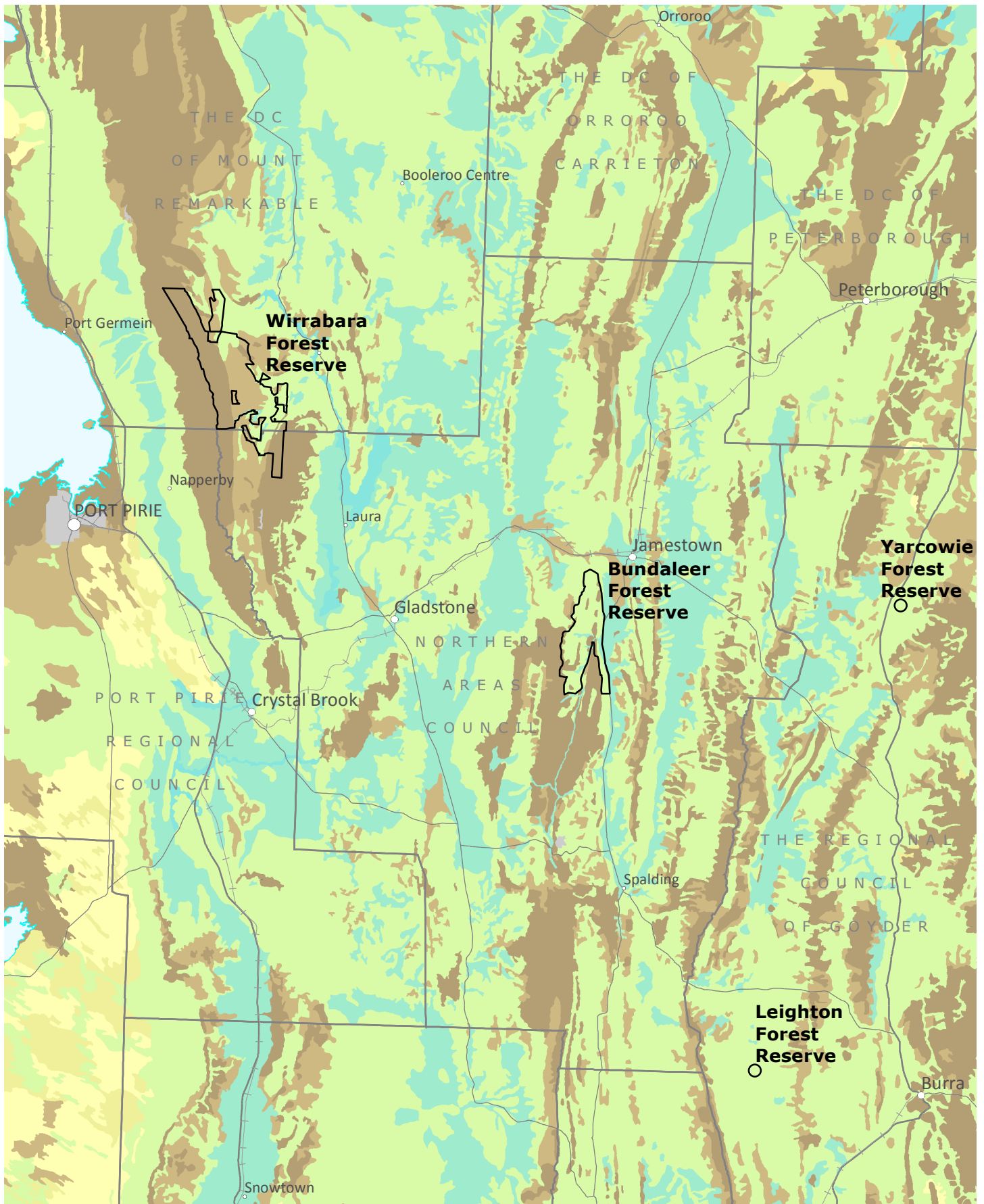


MID NORTH REGION - Land Use Potential for Canola



Produced by: PIRSA Spatial Information Services
 Production date: 25/03/2015
 Data sources: ForestrySA, Department of Environment, Water and Natural Resources, Department of Planning, Transport and Infrastructure
 Map projection: Lambert Conformal Conic
 Geodetic datum: GDA94

Land Use Potential for Canola

Proportion of land with moderate to high potential

- More than 60%
- More than 60%
- More than 60%
- More than 60%
- 30 - 60%
- 10 - 30%
- 1 - 10%
- Less than 1%
- Less than 1%
- Not applicable

Most common potential class

- High
- Moderately high
- Moderate to high
- Moderate
- Low to high
- Moderately low to low
- Moderately low to low
- Moderately low
- Low

- Mid North forest reserves
- Local government areas

Land use potential based on soil and landscape attributes only - no account has been taken of water quality or availability, climatic factors or existing land use.

The map displays a regional overview and should not be used to draw conclusions about specific locations. Based on an interpretation of soil landscape map units which account for variable conditions found within each map unit. Boundaries between map units should be treated as transition zones. Land assessment: DEWNR Soil and Land Program 2009.

