

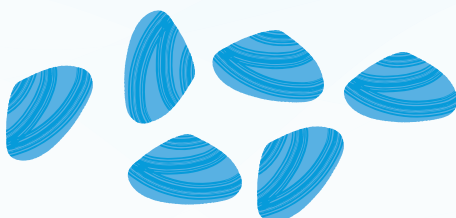
2020/21

Goolwa Pipi Survey

Due to the localised nature of the recreational fishery for Pipi at Goolwa, an on-site survey was conducted to estimate harvest during the 2020/21 season. Data were collected over **22 days** at Goolwa, Middleton and the Sir Richard Peninsula.

850 fishers from **351 fishing parties** were interviewed

The estimated catch was **4.3 million** Pipi weighing **68 tonnes**



On average **216 Pipi** were caught **per fishing party** per day



11,170 days
of fishing effort

Most of the catch was from fishers in vehicles



vehicles 91%

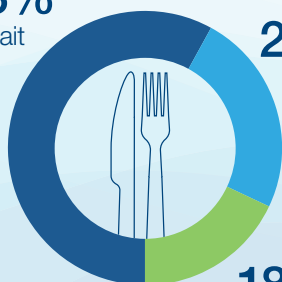
pedestrians 9%

How was Pipi used?

58%
bait

24%
food

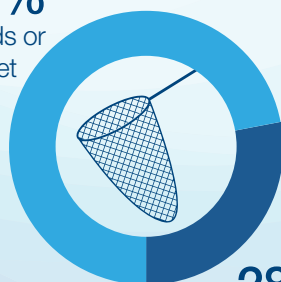
18%
both



How was Pipi caught?

72%
hands or
feet

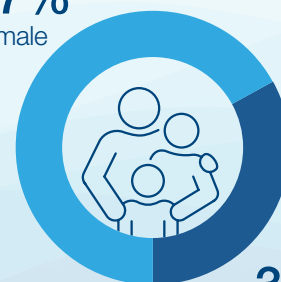
28%
nets, shovels
or rakes



Who caught Pipi?

67%
male

33%
female



Government of South Australia
Department of Primary Industries
and Regions