

Foot-and-mouth disease – sheep

Foot-and-mouth disease (FMD) is a highly contagious disease which affects all cloven-hoofed animals including cattle, buffalo, pigs, sheep, deer, camelids (alpacas, llamas and camels) and goats. Australia is free from the disease.

What are the signs of FMD?

The most overt sign in sheep and goats may be lameness. This will appear similar to endemic disease causes of lameness like footrot.

You need to closely inspect the animal to see some of the other signs of FMD. Affected sheep and goats may:

- seem depressed
- develop sudden lameness
- be reluctant to stand
- have blisters at top of the foot and between claws
- have lesions on the tongue and dental pad
- have fever and depression
- die (lambs).

How does FMD spread?

FMD spreads rapidly through close contact between animals as the virus is excreted in:

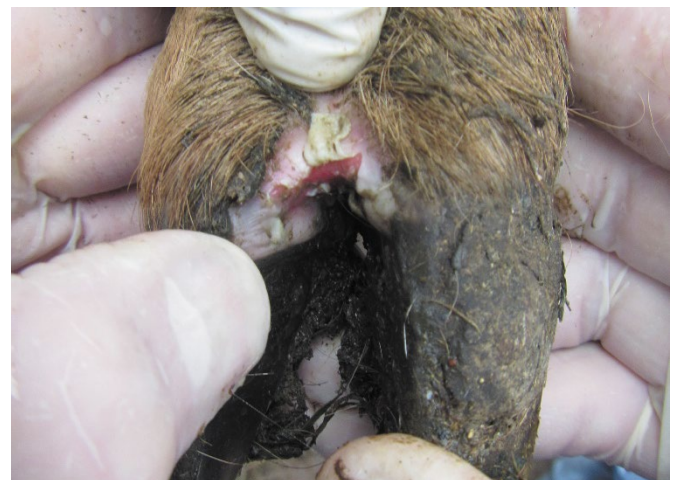
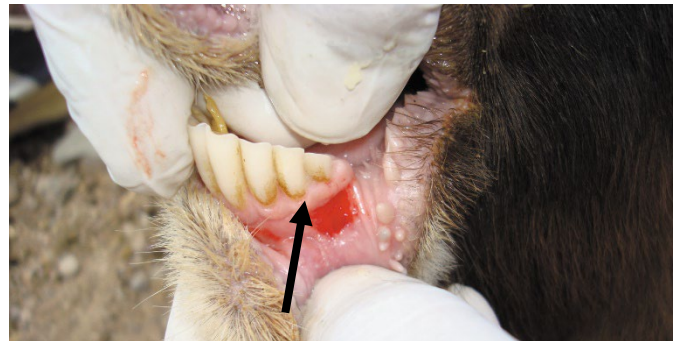
- breath
- saliva
- mucous
- milk
- faeces.

FMD virus can also spread through:

- animal products such as meat, bones, untreated hides and dairy products
- food scraps
- vehicles and equipment
- clothing and footwear
- wind.

What do I do if I suspect FMD?

FMD is a notifiable disease. If you suspect the disease in your animals, you must report it to the Emergency Animal Disease Hotline on 1800 675 888 or to your local vet.



Photos: European Commission for the Control of FMD and Department of Jobs, Skills, Industry and Regions (Victoria).