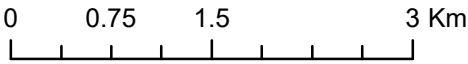
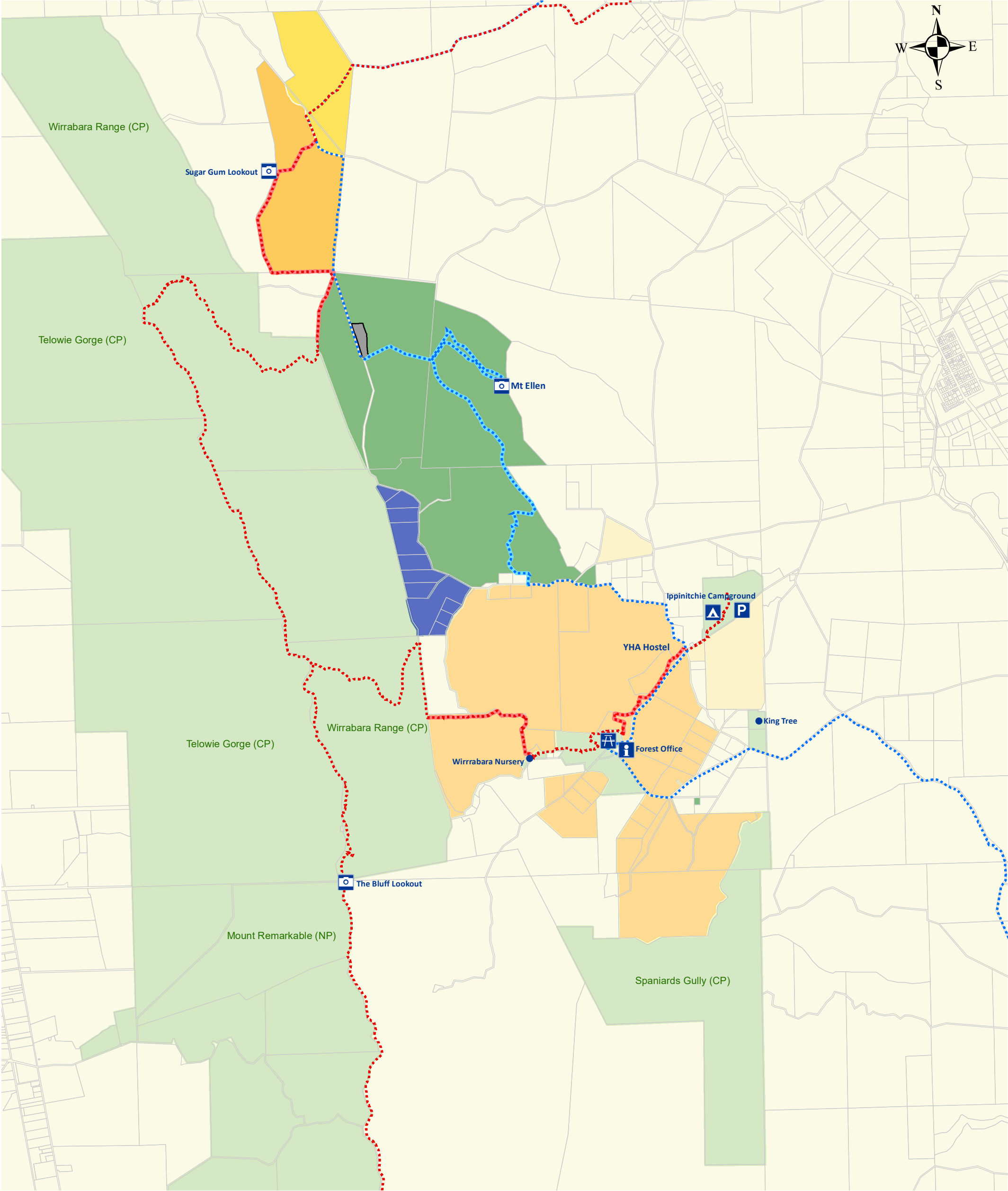


WIRRABARA FOREST



Sites of interest

- Information
- Carpark
- Picnic Ground
- Campground
- Lookout / Vantage Point
- Point of Interest
- Cadastral Parcels

Government public areas areas and trails

- Heysen Trail
- Mawson Trail
- Wirrabara Heysen Greenway
- Wirrabara Mawson Greenway
- Parks and Reserves (DEW)
- ForestrySA (grazing licence)

Sales and leases

- Manuka Honey Trial Licence
- Lease 1 (grazing)
- Lease 2 (grazing)
- Lease 3 (commercial forestry)
- Lease 4 (grazing)
- Sale 1 (horticulture)

Produced by: PIRSA Spatial Information Services
Production date: 8/05/2019
Data sources: ForestrySA, Department of Environment and Water, Department of Planning, Transport and Infrastructure
Coordinate System: GDA 1994 MGA Zone 54
Map projection: Transverse Mercator
Geodetic datum: GDA 1994

DISCLAIMER:
PIRSA and its employees do not warrant or make any representation regarding the use, or results of the use, of the information contained herein. PIRSA and its employees expressly disclaim all liability or responsibility to any person using the information or advice.

