

Department of Agriculture and Fisheries,
South Australia

OPEN DAYS

Northfield Research Laboratories
and Northfield Research Centre

April 4 and 5, 1976



Welcome

Welcome to the Northfield Research Centre and Laboratories, the hub of the South Australian Department of Agriculture and Fisheries research activities. Here we investigate many aspects of farming, livestock production and fruit growing. Our aim is to provide information that will assist both primary producers and the public — the consumers.

We are proud of our facilities and achievements, and these Open Days at Northfield are being held so that you can see and learn about the research work we have done and are continuing to do.

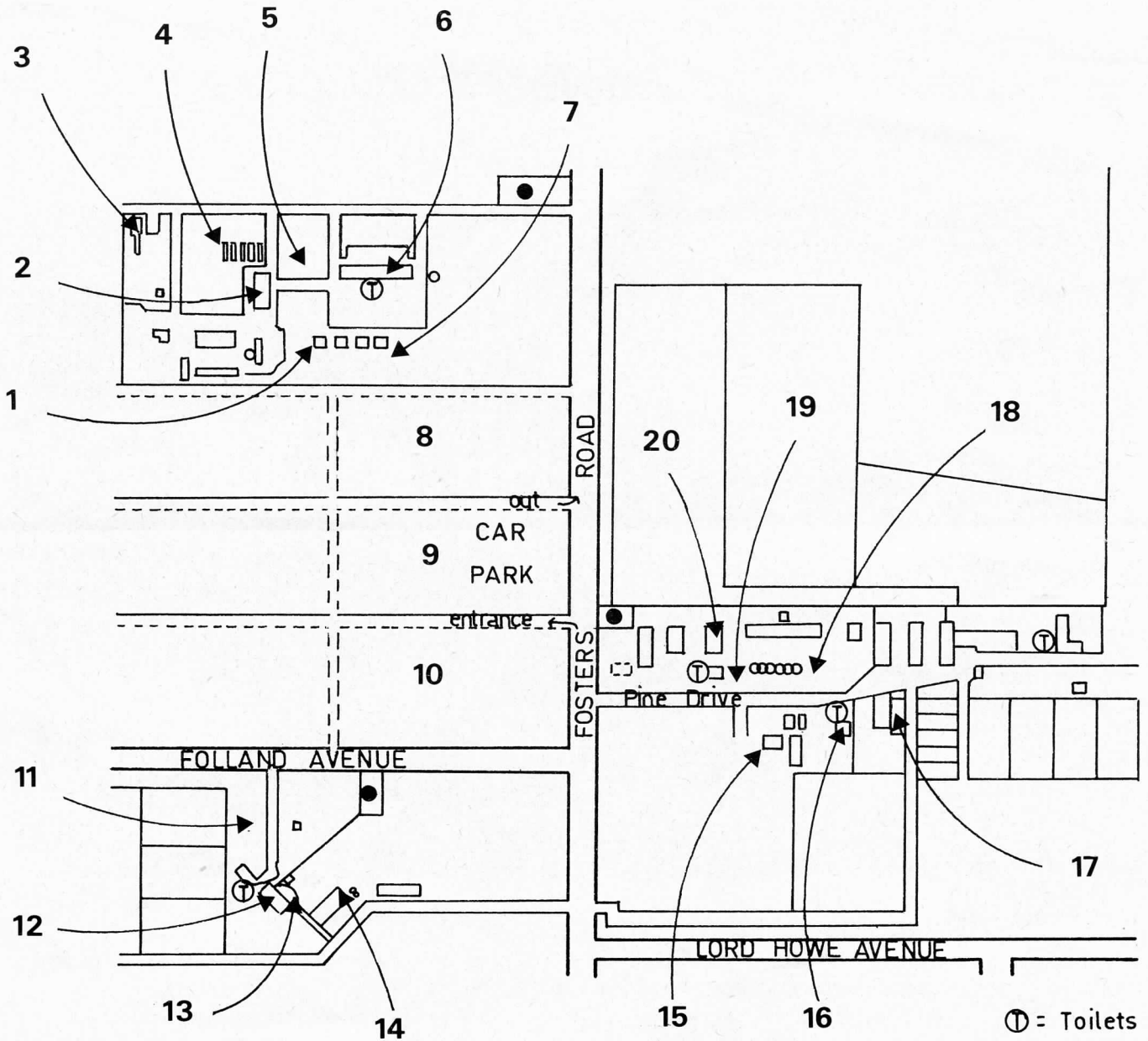
There are many exhibits and displays for you to see. Please feel free to inspect them all and ask about anything you wish to know.

H.P.C. Trumble

(H.P.C. Trumble)

Acting Director of Agriculture and Fisheries

Plan of exhibits



Exhibits and events

1* Annex

Films

Ley farming

Land satellite photos

Soil recording equipment

2. Barn

Animal quarantine

Pig research

3. Glasshouse

Weeds display

Control of weeds

Effect of herbicides

4. Glasshouse

Lucerne breeding

- 5.** Field plot equipment
Fisheries display

6. Main laboratory

Downstairs

Trace elements in the 1970's

Fertilizers for home gardens

Water repellent sand

Vegetable fault in wool

Grain crops

Fisheries research

Upstairs

Butter research

Insects and insecticides

Pastoral areas research

Soil and plant analyses

7. Annex

Extension leaflets

Home garden advice

- 8.** Bushfire research
Victorian Artificial Breeding Service
Cultivation demonstration 1 p.m. 3 p.m.

- 9.** Car park
Information booth

- 10.** Fodder conservation exhibit
Haymaking demonstration 2 p.m., 4 p.m.

- 11.** Calf feeding 1.30 p.m., 2.30 p.m.

12. Laboratory

Milk composition

Cheese making

Skim milk manufacture

13. Milking shed

Demonstrations 1 p.m., 2 p.m., 3 p.m.

14. Animal nursery

Beef exhibit

15. Horticultural area

Demonstration of budding and grafting

Plant improvement programme

Problems in nurseries

16. Farm office

Milk testing

Cattle identification

17. Horticultural Research Unit

Automatic packing of fruit

Storage and freezing of home vegetables

- 18.** Feed mixing equipment

- 19.** Farm gadgets

20. Farm safety

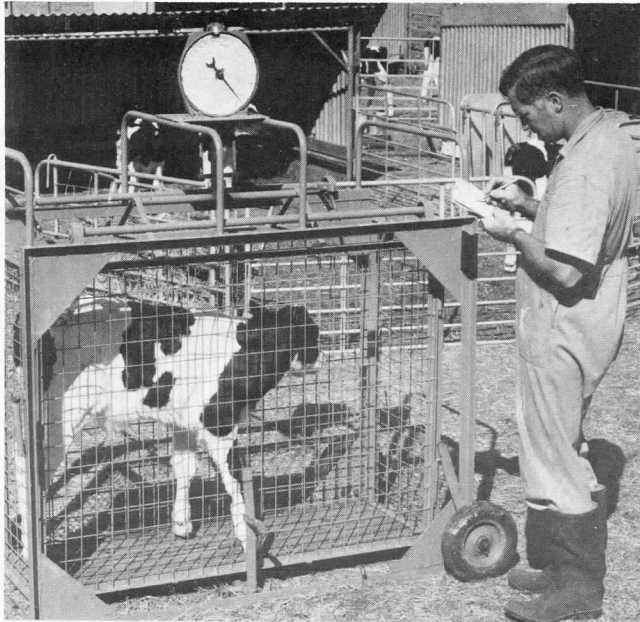
Demonstration on dangers of P.T.O. — 3.30 p.m.

Emergencies

Foyer, Main Laboratory

Information booth, car park

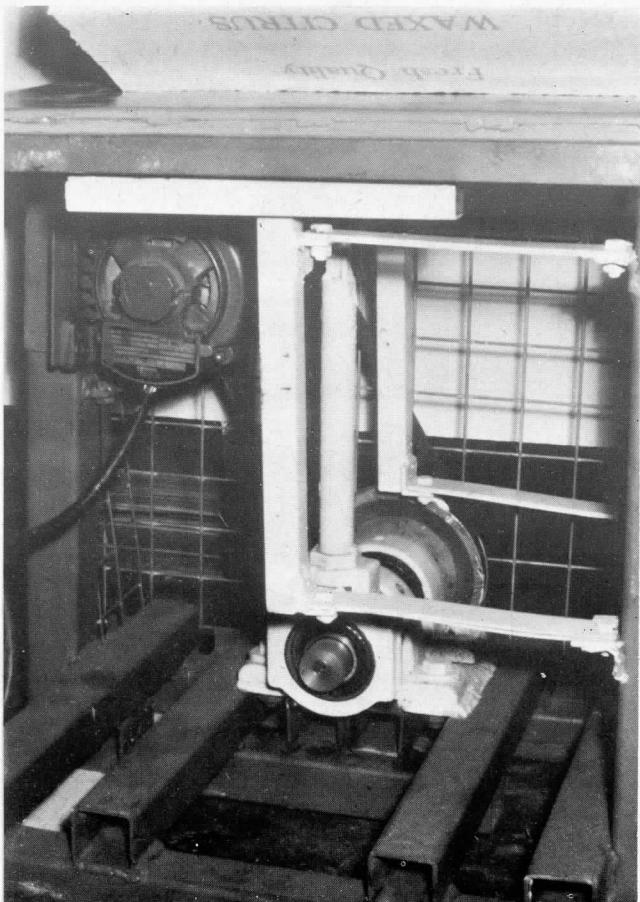
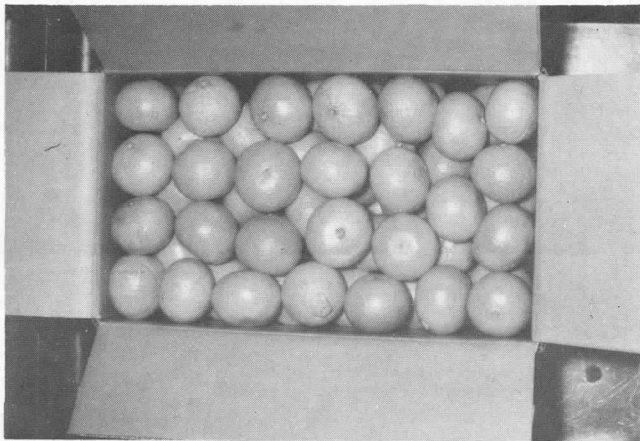
Supervisor of exhibits



A



B



C

**Some of the activities
open for inspection —**

- A. Calf feeding
- B. Laboratory measurement
- C. Automatic packing of
citrus fruit
- D. Measuring fish specimens



D